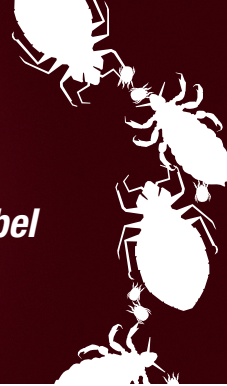




Specimen Label



- Kills Bed Bugs
- Kills Lice
- Kills Dust Mites
- Kills Ticks & Fleas

KEEP OUT OF REACH OF CHILDREN

CAUTION

See reverse for first aid and precautionary statements.

ACTIVE INGREDIENTS:

3-phenoxybenzyl-(1RS, 3RS, 1RS<3RS)-2, 2-dimethyl-3-(2-methylprop-1-enyl) cyclopropanecarboxylate	0.40%
*N-Octyl bicycloheptene dicarboximide	1.60%
OTHER INGREDIENTS	98.00%
	<u>100.00%</u>

* MGK® 264, Insecticide Synergist

- For indoor use in the home and non-food areas of restaurants, schools, nursing homes, warehouses, offices, apartments, hotels, motels, kennels, and hospitals
- Not for use on humans or animals
- Will not stain water-safe fabrics and surfaces
- Kills adult Lice and nymphs as they hatch on bedding, garments, furniture, and other inanimate objects
- Kills Dust Mites on contact

DIRECTIONS FOR USE

It is a violation of Federal Law to use this product in a manner inconsistent with its labeling.

USE RESTRICTIONS:

In hospitals and nursing homes, remove patients before treatment. Ventilate room for two hours before returning patients.

THIS PRODUCT IS NOT FOR USE ON HUMANS:

If lice infestation should occur on humans, use a product labeled for use on humans.

Do not use in commercial food/feed processing, preparation, food/feed storage or serving areas. In the home, all food/feed processing surfaces and utensils should be covered during treatment, or thoroughly washed before use. Exposed food/feed should be covered or removed. Remove pets, birds and cover fish aquariums before spraying.

SHAKE WELL BEFORE EACH USE. Remove protective cap. Aim spray opening away from person. Push button to spray.

Vacate room after treatment and ventilate before reoccupying. Do not allow children or pets to contact treated areas until surfaces are dry.

APPLICATION: Spray in an inconspicuous area to test for possible staining or discoloration. Inspect again after drying, and then proceed to spray entire area to be treated. Hold container upright with nozzle away from you. Depress valve and spray from a distance of 8 to 10 inches. Spray each square foot for 5 seconds or until damp. Most effective results are achieved when used as part of an integrated pest management strategy that includes physical, environmental and other chemical pest control measures.

TO KILL LICE:

Spray only those garments, parts of bedding, including mattresses and furniture that cannot be either laundered or dry-cleaned. Allow sprayed articles to dry thoroughly before use.

TO KILL TICKS AND FLEAS:

Spray around beds, furniture and pet's habitat. Spray pet sleeping quarters, bedding, floor and floor covering where pets are kept. Repeat as necessary. Use only a recommended pet spray on pets.

TO KILL DUST MITES:

First thoroughly vacuum entire room concentrating on areas where mites congregate: such as mattresses, box springs, headboards, walls, floors, carpeting, and baseboards. Then spray surfaces until damp. On mattresses allow spray to dry thoroughly before replacing bedding.

TO KILL BED BUGS:

Apply as a spot treatment to cracks and crevices on and around baseboards, floorboards, bed frames, wall hangings, headboards, furniture, door and window frames, millwork and walls. Apply as a surface spray to carpet, mattresses, box springs, walls, furniture, bedding, floor and floor coverings, rugs, garments, luggage, closets, drapes and other window appointments. Thoroughly clean and air-out mattresses and springs. Then treat only areas that may harbor pests. On mattresses concentrate on tufts, folds and seams. Allow spray to dry before replacing bedding.

STORAGE AND DISPOSAL

Do not contaminate water, food, or feed by storage and disposal.

STORAGE:

Store in a secure, preferably locked storage area that is cool and dry.

DISPOSAL:

Do not puncture or incinerate!

If empty: Place in trash or offer for recycling if available.

If partly filled: Call your local solid waste agency for disposal instructions.

PRECAUTIONARY STATEMENTS

HAZARDS TO HUMANS AND DOMESTIC ANIMALS

CAUTION

Harmful if absorbed through skin. Avoid contact with eyes, skin or clothing. Wash thoroughly with soap and water after handling and before eating, drinking, chewing gum, or using tobacco. Remove and wash contaminated clothing before reuse.

PHYSICAL OR CHEMICAL HAZARDS

Flammable. Contents under pressure. Keep away from heat, sparks, and open flame. Do not puncture or incinerate container. Exposure to temperatures above 130°F may cause bursting. Do not apply this product around electrical equipment due to the possibility of shock hazard.

FIRST AID

IF IN EYES:

- Hold eye open and rinse slowly and gently with water for 15-20 minutes.
- Remove contact lenses, if present, after the first 5 minutes, then continue rinsing eye.
- Call a poison control center or doctor for treatment advice.

IF ON SKIN

OR CLOTHING:

- Take off contaminated clothing.
- Rinse skin immediately with plenty of water for 15-20 minutes.
- Call a poison control center or doctor for treatment advice.

IF SWALLOWED:

- Immediately call a poison control center or doctor.
- Do not induce vomiting unless told to do so by the poison control center or doctor.
- Do not give **any** liquid to the person.
- Do not give anything by mouth to an unconscious person.

Have the product container or label with you when calling a poison control center or doctor, or going for treatment. For information regarding medical emergencies or pesticide incidents, call 1-888-740-8712.



BEDLAM, McLaughlin Gormley King Company and MGK are registered trademarks of McLaughlin Gormley King Company. Manufactured by McLaughlin Gormley King Company®. ©2007 McLaughlin Gormley King Company. All rights reserved. 8810 Tenth Avenue North, Minneapolis, MN 55427 037-1360/0907

EPA Reg. No. 1021-1767

EPA Est. No. 1021-MN-2